

Exceptional Productivity and Persistence on Your Toughest Soils

Boone, Iowa		Savage, Minnesota		Marshfield, Wisconsin		West Salem, Wisconsin	
Variety	Yield (T/A)	Variety	Yield (T/A)	Variety	Yield (T/A)	Variety	Yield (T/A)
WL 348 AP	9.86	WL 348 AP	8.71	WL 348 AP	7.75	WL 348 AP	17.46
DKA42-15	9.37	WL 327	8.68	Geneva	7.59	Magnum V	16.06
HybriForce-400	9.34	LegenDairy YPQ	8.65	Ameristand 403-T	7.14	GH 750	15.65
Pioneer 54V54	9.34	Ameristand 403-T	8.64	Pioneer 54V54	6.88	Pioneer 54V54	15.64
Ameristand 403-T	9.06	Pioneer 54V54	8.54	HybriForce-400	6.76	FQ 314	15.40
Multiplier-3	9.06					Affinity +Z	14.90

WL 348 AP

Outstanding yield potential, exceptional winterhardness, and superior seedling establishment on your toughest soils make WL 348 AP the alfalfa variety of choice for dairy, beef, and cash hay producers looking to significantly reduce the impact of root disease on stand life and profitability.

WL 348 AP Advantages:

- Unique wet-soil disease resistance package (including HR to Race 2 Aphanomyces) demonstrates significant on-farm benefits in stand establishment, persistence, and forage yield.
- First alfalfa with a “perfect” Disease Resistance Index (DRI) of 35/35.
- Excellent feed value and superior digestibility produces more milk or beef and greater profitability when fed.
- Very high-yielding under 3- to 5-cut harvest managements; produces big yields across a wide range of soil types.
- Very fast recovery after cutting and superior standability encourages intensive harvest management; WL 348 AP produces higher yields and higher quality forage more often with less risk.
- Dark green, fine-stemmed, and highly palatable.
- Excellent early maturing companion variety to WL 319 HQ.
- Very well adapted for use in the Midwestern and Northeastern regions of the U.S. for hay and haylage uses.
- Patented technology; issue of U.S. Patent No. 6,359,195 recognizes the culmination of more than 10 years of research and breeding by W-L for resistance to Race 2 Aphanomyces root rot in alfalfa.



WL 348AP



■ Area of Primary Adaptation

WL 348AP Delivers Greater Income Per Acre

LaCrosse, Wisconsin

Variety	%CP	RFQ*	\$ Per Acre
WL 348 AP	21.6	154	\$2,408
Magnum V	20.9	146	\$2,065
Pioneer 54V54	21.0	152	\$2,031
FQ 314	21.2	156	\$1,970
Affinity +Z	21.0	149	\$1,906

*Relative Forage Quality



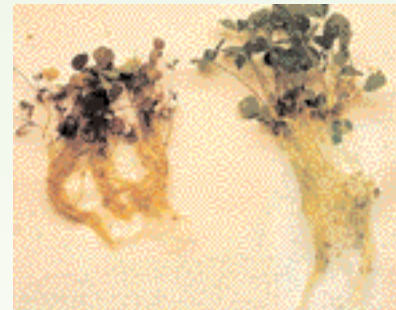
W-L Research

PO Box 8112
Madison, WI 53708-8112
800-406-7662
wlresearch.com

Do You Need Race 2 Aphanomyces Root Rot Resistance?

Aphanomyces root rot in alfalfa was first discovered at the University of Wisconsin in 1987. The Aphanomyces fungus prunes alfalfa roots, resulting in stunted, chlorotic plants, and poor seedling establishment on wet soils. Most alfalfa varieties currently marketed in the U.S. are resistant to Race 1 Aphanomyces, but very few varieties are resistant to Race 2.

Race 2 Aphanomyces isolates are widespread and cause severe disease on Race 1-resistant varieties. University forage specialists in Illinois, Iowa, Kentucky, and Wisconsin have isolated Race 2 Aphanomyces in their states, and they suggest that Race 2 Aphanomyces may represent a widespread production risk to alfalfa varieties having only Race 1 Aphanomyces resistance.



Highly resistant WL 348 AP shown above on right.

We believe that planting alfalfa with high resistance to Race 2 Aphanomyces (e.g. WL 348AP) will provide growers with an opportunity to significantly improve alfalfa stand establishment and productivity on heavy or poorly drained soils where root diseases are likely to occur.

Agronomic Traits

Maturity	Early
Fall Dormancy	3.5
Winterhardiness	1.8
Forage Yield Index	Excellent
Digestibility/Feed Value	Superior
Persistence Index	Very High
Disease Resistance Index (DRI)	35/35
Recovery After Harvest	Very Fast
Traffic Tolerance	Very Good
Standability	Excellent

Pest Resistance Traits

Bacterial Wilt	HR
Fusarium Wilt	HR
Anthracnose	HR
Phytophthora Root Rot	HR (68%)
Aphanomyces Root Rot (Race 1)	HR (77%)
Aphanomyces Root Rot (Race 2)	HR (56%)
Verticillium Wilt	HR
Leaf Disease	R
Aphids	R
Nematodes	R

HR = Highly Resistant R = Resistant